

n o
t h i n g
b u t
w u n
d e r
b a r .



OVERVIEW ROLF BENZ JUA

**ROLF
BENZ**

OUTDOOR

Chair | Rolf Benz JUA | Design Hoffmann & Kahleiss

PRODUCT FEATURES CHAIR ROLF BENZ JUA:

1. Selection synthetic seat shell

- | Dimensions: 60 cm x 65 cm, height 85/87 cm
- | 2 seat heights: 49 or 51 cm, seat depth: 45 cm, 2 side section heights: 61 or 63 cm
- | Color: umbra gray matt or anthracite matt
- | Four-legged base (powder-coated anthracite matt stainless steel) with optional swivel function

2. Choice of seat and back cushions

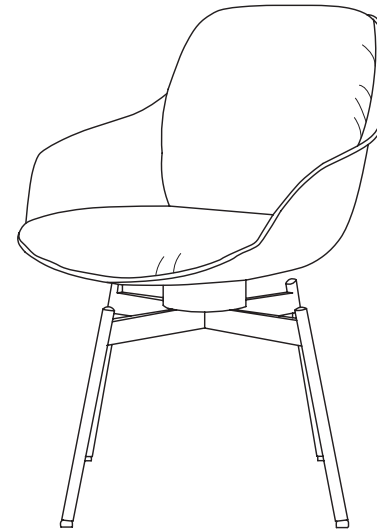
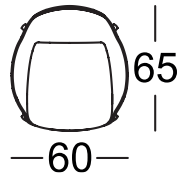
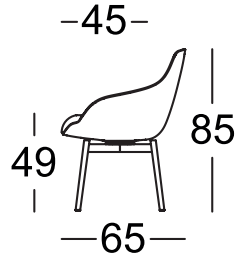
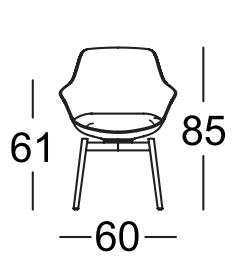
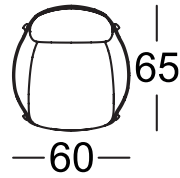
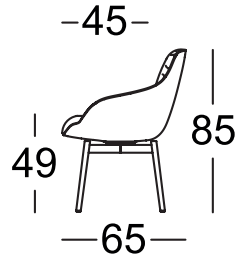
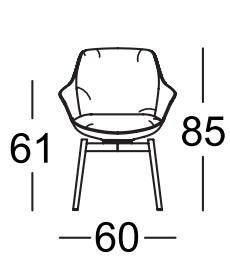
- | Color: Rolf Benz Outdoor cover collection



**ROLF
BENZ**

OUTDOOR

Chair | Rolf Benz JUA | Design Hoffmann & Kahle



Fabrics | Rolf Benz Outdoor

The fabrics in the Rolf Benz outdoor collection have been tested according to the strict specifications of our quality requirements. This ensures that the outdoor product segment meets our usual high Rolf Benz quality standards.

The Rolf Benz outdoor fabric collection guarantees the following features:



UV light-resistant



Mould-resistant



Breathable comfort



Suitable for bleaching*



Sun protection*



Water and dirt-repellent*

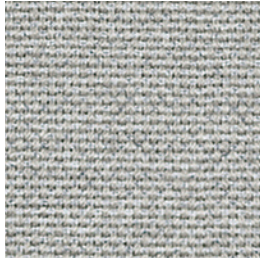
*For fabrics composed of spun-dyed acrylic, there may be slight color variations between the pattern and the series.

*Does not apply to fabrics with the following composition:

88 % polypropylene, 12 % polyester

86 % polypropylene, 14 % polyester

Sunbrella fabrics overview | Rolf Benz Outdoor



12.751



24.750



24.751



24.752

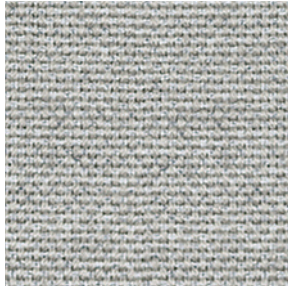


24.753

**ROLF
BENZ**

OUTDOOR

Sunbrella fabrics | Rolf Benz Outdoor



12.751

Composition:

100 % polyacrylic

Light fastness: ☀️☀️☀️

Abrasion resistance: ••

Pilling behaviour: •

Fabric width: 140 cm

Pattern repeat included: No

Selvage edge runs parallel to the front edge of the seat

Other special features: No

Washable: 30 degrees

* Scale has a maximum of three suns:

One sun: fulfilled; two suns: fulfilled +; three suns: fulfilled ++

** •• Above-averagely good; • Testing standards were completely fulfilled;

○ Limited practicality



24.750 – 24.753

Composition:

100 % polyacrylic

Light fastness: ☀️☀️☀️

Abrasion resistance: •

Pilling behaviour: •

Fabric width: 140 cm

Pattern repeat included: No

Selvage edge runs parallel to the front edge of the seat

Special features:

Contrasting colours create an iridescent appearance.

This can create light and dark effects depending on how the light falls

Washable: 30 degrees

**ROLF
BENZ**

OUTDOOR

More fabrics | Rolf Benz Outdoor



16.250



16.251



17.150

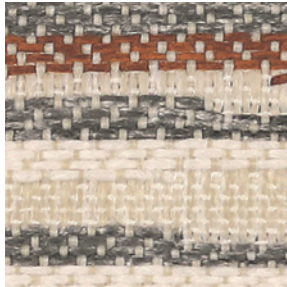


17.151



17.152

More fabrics | Rolf Benz Outdoor



16.250 – 16.251

Composition:

86 % polypropylene, 14 % Polyester

Light fastness: ☀️☀️

Abrasion resistance: •

Pilling behaviour: •

Fabric width: 140 cm

Pattern repeat included: No

Selvage edge runs parallel to the front edge of the seat

Special features:

Contrasting colours create an iridescent appearance. This can create light and dark effects depending on how the light falls

Washable: 30 degrees

Important: Please wash separately.

Washing may cause colours to fade.



17.150 – 17.152

Composition:

86 % polypropylene, 14 % Polyester

Light fastness: ☀️☀️

Abrasion resistance: •

Pilling behaviour: •

Fabric width: 140 cm

Pattern repeat included: No

Selvage edge runs parallel to the front edge of the seat

Special features:

Contrasting colours create an iridescent appearance. This can create light and dark effects depending on how the light falls. Irregular fabric appearance due to yarn slubs, nubs etc. Dark and intensive colours have a tendency to wet abrasion.

Washable: 30 degrees

Important: Please wash separately.

Washing may cause colours to fade.

**ROLF
BENZ**

OUTDOOR

More fabrics | Rolf Benz Outdoor



20.460



20.461



20.462



20.463

More fabrics | Rolf Benz Outdoor



20.460 – 20.463

Composition:

86 % polypropylene, 14 % Polyester

Light fastness: ☀️☀️

Abrasion resistance: • •

Pilling behaviour: •

Fabric width: 140 cm

Pattern repeat included: No

Selvage edge runs parallel to the front edge of the seat

Special features:

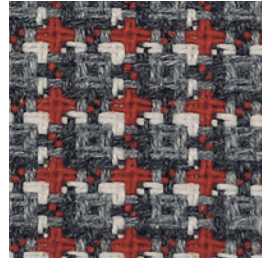
Contrasting colours create an iridescent appearance. This can create light and dark effects depending on how the light falls. Irregular fabric appearance due to yarn slubs, nubs etc. Dark and intensive colours have a tendency to wet abrasion. The fabric will pull if it is caught by sharp objects

Washable: 30 degrees

More fabrics | Rolf Benz Outdoor

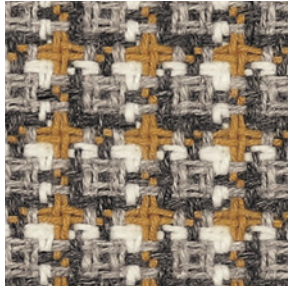


28.290



28.291

Weitere Stoffe | Rolf Benz Outdoor



28.290

Composition:

86 % polypropylene, 14 % Polyester

Light fastness: ☀ ☀ ☀

Abrasion resistance: •

Pilling behaviour: •

Fabric width: 140 cm

Pattern repeat included: No

Selvage edge runs parallel to the front edge of the seat

Special features:

Il flat-weave fabrics will roughen up through use.

The fabric will pull if it is caught by sharp objects.

Fibres from other textiles and dust may visibly attach themselves to the surface

Washable: 30 degrees



28.291

Composition:

86 % polypropylene, 14 % Polyester

Light fastness: ☀ ☀ ☀

Abrasion resistance: •

Pilling behaviour: •

Fabric width: 140 cm

Pattern repeat included: No

Selvage edge runs parallel to the front edge of the seat

Special features:

Il flat-weave fabrics will roughen up through use.

The fabric will pull if it is caught by sharp objects.

Fibres from other textiles and dust may visibly attach themselves to the surface

Washable: 30 degrees

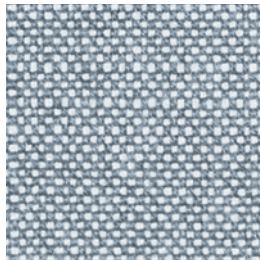
**ROLF
BENZ**

OUTDOOR

Additional fabrics in the collection overview | Rolf Benz Outdoor



20.652



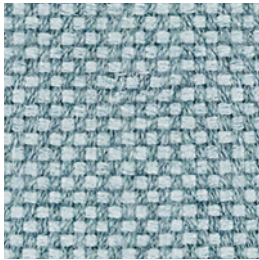
20.654



20.750



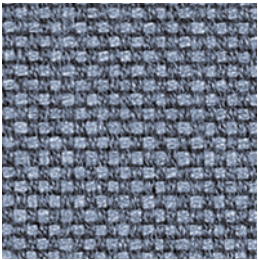
20.752



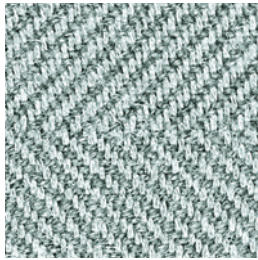
22.550



22.552



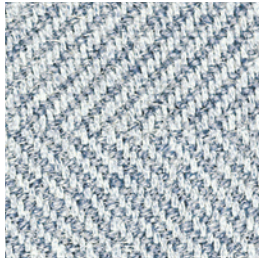
22.555



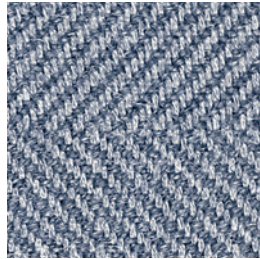
22.650



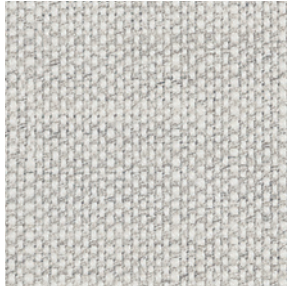
22.652



22.654



22.655



20.652 – 20.654

Composition:

100 % polyacrylic

Light fastness: ☀️☀️

Abrasion resistance: •

Pilling behaviour: •

Fabric width: 140 cm

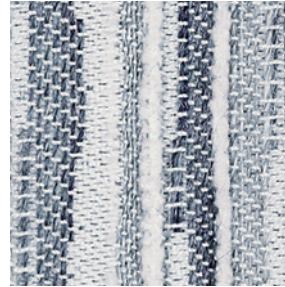
Pattern repeat included: No

Selvage edge runs parallel to the front edge of the seat

Special features:

A slight stripy effect occurs due to the material. Irregular fabric appearance due to yarn slubs, nubs etc. The fabric's appearance reflects its natural character

Washable: 30 degrees



20.750 - 20.752

Composition:

100 % polyacrylic

Light fastness: ☀️☀️

Abrasion resistance: •

Pilling behaviour: •

Fabric width: 140 cm

Pattern repeat included: No

Selvage edge runs parallel to the front edge of the seat

Special features:

Irregular appearance, for example caused by slubs, nubs, etc.

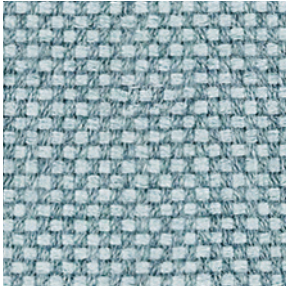
Washable: 30 degrees

Important: For loose backrest cushions only

**ROLF
BENZ**

OUTDOOR

Additional fabrics in the collection | Rolf Benz Outdoor



22.550 - 20.552

Composition:

100 % polyacrylic

Light fastness: ☀️☀️

Abrasion resistance: •

Pilling behaviour: •

Fabric width: 140 cm

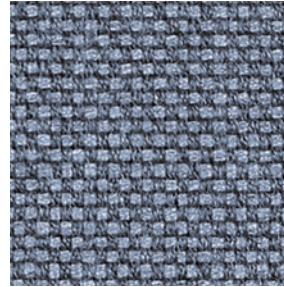
Pattern repeat included: No

Selvage edge runs parallel to the front edge of the seat

Special features:

Irregular appearance, for example caused by slubs, nubs, etc. Fibres from other textiles and dust may visibly attach themselves to the surface

Washable: 30 degrees



22.555

Composition: 100 % polyacrylic

Light fastness: ☀️☀️

Abrasion resistance: •

Pilling behaviour: •

Fabric width: 140 cm

Pattern repeat included: No

Selvage edge runs parallel to the front edge of the seat

Special features:

Irregular appearance, for example caused by slubs, nubs, etc. Fibres from other textiles and dust may visibly attach themselves to the surface

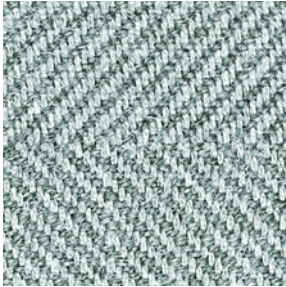
Washable: 30 degrees

Important: For loose backrest cushions only

**ROLF
BENZ**

OUTDOOR

Additional fabrics in the collection | Rolf Benz Outdoor



22.650 - 22.655

Composition:

100 % polyacrylic

Light fastness: ☀️☀️

Abrasion resistance: •

Pilling behaviour: •

Fabric width: 140 cm

Pattern repeat included: No

Selvage edge runs parallel to the front edge of the seat

Special features:

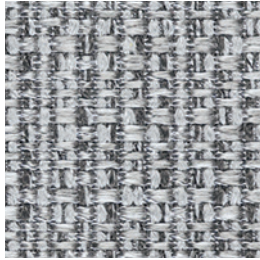
Fibres from other textiles and dust may visibly attach themselves to the surface

Washable: 30 degrees

**ROLF
BENZ**

OUTDOOR

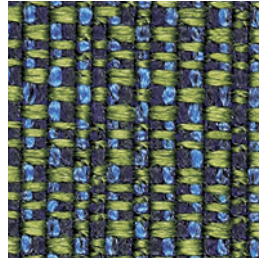
Additional fabrics in the collection overview | Rolf Benz Outdoor



18.851



18.853



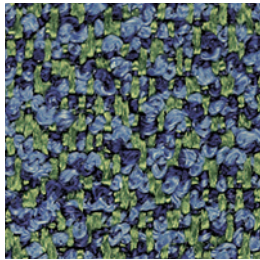
18.854



20.851



20.853



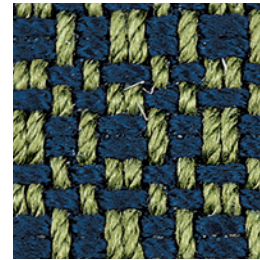
20.854



22.851



22.853



22.854

Additional fabrics in the collection | Rolf Benz Outdoor



18.851 - 18.854

Composition:

86 % polypropylene, 14 % polyester

Light fastnes: ☀

Abrasion resistance: •

Pilling behaviour: •

Fabric width: 140 cm

Pattern repeat included: No

Selvage edge runs parallel to the front edge of the seat

Special features:

Contrasting colours create an iridescent appearance. This can create light and dark effects depending on how the light falls. Dark and intensive colours have a tendency to wet abrasion. The fabric will pull if it is caught by sharp objects.

Washable: 30 degrees



20.851 - 20.854

Composition:

88 % polypropylene, 12 % polyester

Light fastnes: ☀

Abrasion resistance: •

Pilling behaviour: •

Fabric width: 140 cm

Pattern repeat included: No

Selvage edge runs parallel to the front edge of the seat

Special features:

Dark and intensive colours have a tendency to wet abrasion. The fabric will pull if it is caught by sharp objects.

Washable: 30 degrees

**ROLF
BENZ**

OUTDOOR

Additional fabrics in the collection | Rolf Benz Outdoor



22.851 - 22.854

Composition: 100 % polypropylene

Light fastnes: ☀

Abrasion resistance: •

Pilling behaviour: •

Fabric width: 140 cm

Pattern repeat included: No

Selvage edge runs parallel to the front edge of the seat

Special features:

Contrasting colours create an iridescent appearance.

This can create light and dark effects depending on how the light falls. Dark and intensive colours have a tendency to wet abrasion. The fabric will pull if it is caught by sharp objects.

Washable: 30 degrees

Important: For loose backrest cushions only

**ROLF
BENZ**

OUTDOOR

Materials | Rolf Benz Outdoor

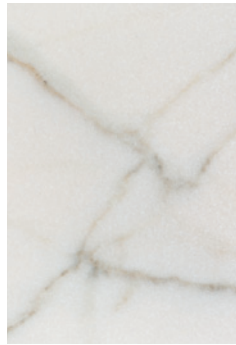
SHELVING MATERIALS



Bamboo



Teak

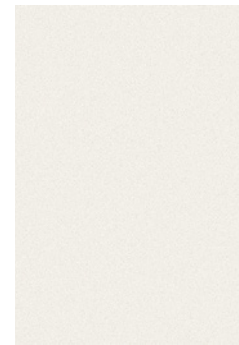


Calacatta Smooth

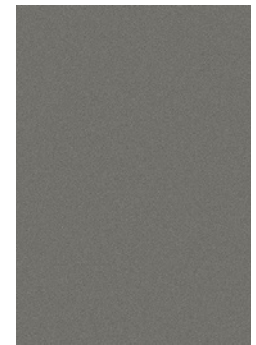


Naturali Pietre

FRAME COLOUR



Bianco
fine-grain matt

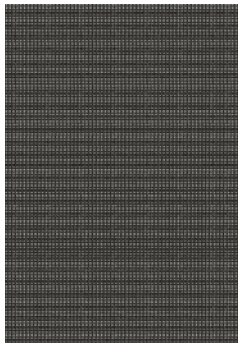


Anthracite
matt

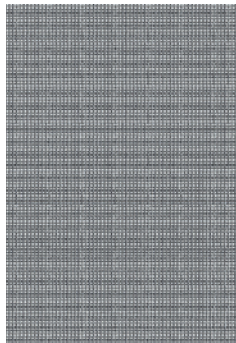
COLOUR OF WEAVING AND STRAPS



Cord for Anthracite
and Bianco



Strap



Strap